

## Squish<sup>®</sup> for Java<sup>®</sup>

### DATA SHEET

Functional GUI testing is a vital part of the development and QA process of today's complex GUI applications. Manually testing the GUI of an application is error-prone, unreliable, unpredictable and slow. Automating this process on the other hand, allows to reliably deliver results quickly, enabling developers to find and fix regressions in nearly no time. This does not only save time but also money.

Squish for Java is the most powerful automated GUI testing tool for Java™ Swing/AWT, SWT and Eclipse® Rich Client Platform (RCP) applications. Squish for Java offers dedicated support and tight integration for these GUI toolkits.

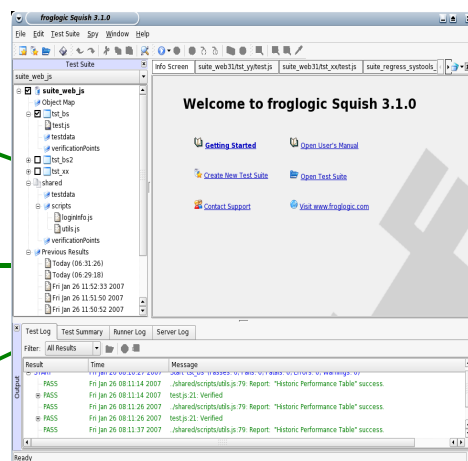
Using the comfortable Squish IDE, tests are created using Squish's event recorder. Verification and synchronization points can be easily inserted. Squish allows the user to choose between popular and open scripting languages such as Python, JavaScript, Perl and Tcl for test scripts. Therefore the complete set of language features, in addition to Squish's test-specific APIs can be used to create powerful and robust tests.

Squish for Java recognizes all standard Java GUI controls and offers special support for complex widgets such as tree-, table-, list and menu controls. In addition Squish for Java recognizes custom Java controls. Squish for Java's mechanism to identify Java GUI widgets is very robust to make sure Squish tests will keep working while the application evolves.

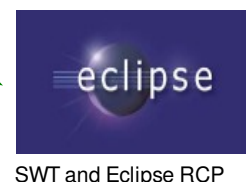
Squish for Java provides access to the complete Java API via its test scripting languages and offers access to all objects and properties via the Spy and verification point editor. Additionally, it is possible to access the application's API from test scripts for even more advanced tests and verifications.

Squish for Java supports is completely cross-platform and natively runs on Windows, Linux®, Mac OS X, Embedded Linux and other Unix-based systems. All tests created with Squish are cross-platform and run without modifications on each supported platform.

Squish is an open system that can also be driven remotely. A set of command-line tools allow an easy integration in any test management system. Squish also offers special APIs and tools to create and run data- and keyword-driven tests.



Squish/Java supports cross-platform testing of Swing/AWT and SWT/RCP applications.



# Squish<sup>®</sup> for Java<sup>®</sup>

## DATA SHEET

### Squish for Java Facts

<b>Supported Platforms</b> <ul style="list-style-type: none"> <li>✓ Windows (NT, 2000, XP, Vista)</li> <li>✓ Linux and Unix derivatives like Solaris, HP-UX, AIX and IRIX.</li> <li>✓ Mac OS X</li> </ul>	<b>Supported Java GUI Technologies</b> <ul style="list-style-type: none"> <li>✓ AWT</li> <li>✓ Swing</li> <li>✓ SWT</li> <li>✓ Eclipse Rich Client Platform (RCP)</li> </ul>
<b>Key Features</b> <ul style="list-style-type: none"> <li>✓ Portable test scripts</li> <li>✓ Very responsive and competent support desk</li> <li>✓ Robust object identification</li> <li>✓ Support for AWT/Swing and SWT and Rich Client Platform controls</li> <li>✓ Access to complete Java API from tests</li> <li>✓ Advanced synchronization</li> <li>✓ Distributed test execution</li> <li>✓ Integration with Mercury Quality Center and other test frameworks</li> <li>✓ Data-driven testing</li> <li>✓ Non-intrusive application hooking</li> </ul>	<b>Key Benefits</b> <ul style="list-style-type: none"> <li>✓ Simple setup, simple automation</li> <li>✓ Platform independence</li> <li>✓ Robust tests</li> <li>✓ Ensure quality and reliability</li> <li>✓ Verify correct behavior</li> <li>✓ Prevent product defects</li> <li>✓ Find regressions quickly</li> <li>✓ Accelerate time to market</li> <li>✓ Improve productivity</li> <li>✓ Constant quality overview</li> <li>✓ Reduced test maintenance</li> <li>✓ Easy test creation</li> </ul>

### Squish for Java Price & Licenses

Included Features	Tester License*	Runner License*
Create, edit and debug tests on all platforms	✓	-
Execute tests on all platforms	✓	✓
1 Year of unlimited updates (incl. major releases)	✓	✓
1 Year of support	✓	✓
<b>Named User License**</b>	2,400 EUR or 3,240 USD***	450 EUR or 610 USD***
<b>Annual Support &amp; Updates Renewal</b>	800 EUR or 1,080 USD***	150 EUR or 200 USD***
<b>Floating License</b>	Contact <a href="mailto:sales@froglogic.com">sales@froglogic.com</a>	Contact <a href="mailto:sales@froglogic.com">sales@froglogic.com</a>

\* Runner licenses can only be purchased if at least one Tester License is purchased. 1 Tester License includes 3 Runner Licenses for free.  
 \*\* Volume discounts apply when purchasing multiple licenses. Contact [sales@froglogic.com](mailto:sales@froglogic.com) for details.  
 \*\*\* US Dollar prices are based on the Euro price and are subject to change according to the EUR/USD exchange rate.