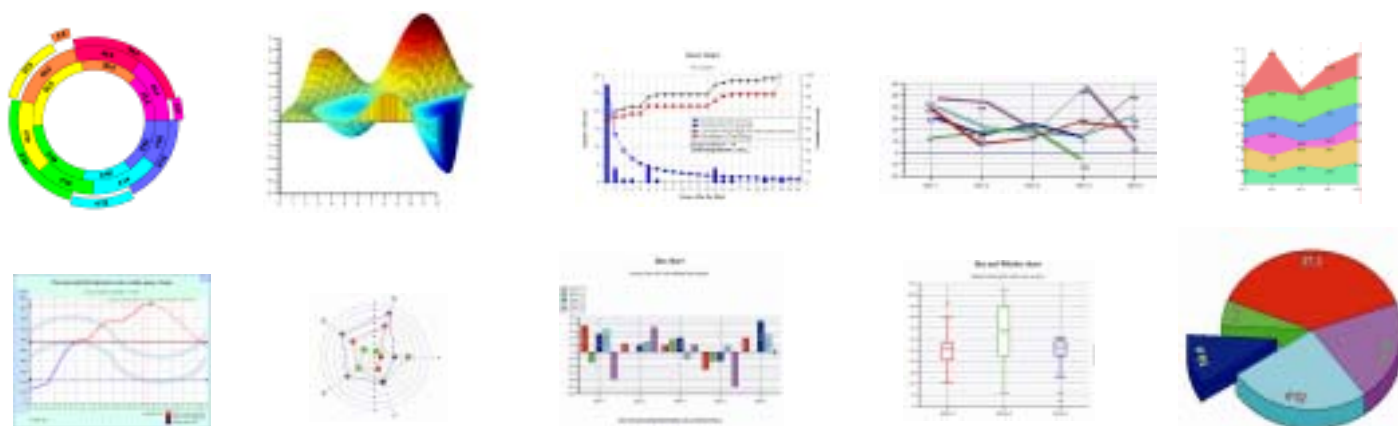


The Most Powerful, Flexible, and Complete Charting and Graphing Tool for Qt

GraphPak
For Qt

GraphPak™ for Qt® gives you all of the charting and graphing tools you need to deliver the most intuitive data-intensive applications. Comprehensive APIs allow you to easily manage a large number of axes and dimensions at the same time while providing unsurpassed flexibility and customization.



The Complete Set of Charts for any Qt Application

GraphPak for Qt comes with all the charts and graphs you expect from a professional graphing library. Graphs types include:

- Bar
- Line
- Pie
- Ring
- Area
- High/Low
- Box and Whisker
- Polar

Model View Controller Architecture and Flexible Data Handling

Because GraphPak for Qt is designed under a Model-View-Controller architecture which logically separates data from visual appearance, it is easy to generate multiple views of your data. Changing chart types on the fly, resizing or moving custom text boxes or pictures, and fine-tuning axis settings, are all possible without touching the underlying data model.

Highlighting individual data points or bars, defining a special line style for a part of your chart, displaying additional horizontal or vertical lines pointing to or intersecting a data point, and much more, can be done using the sophisticated "cell-specific properties" technique that is part of GraphPak for Qt. It is even possible to complement your application by adding rich-text boxes and/or frames to data points or to random positions.

Because it is extremely configurable, GraphPak for Qt charts are easily resized by automatically adjusting font sizes and layout. Reasonable default settings for all properties make it possible to quickly and efficiently create user-friendly applications.

For quick results, the ready-to-use KDChartWidget class may be instantiated to add chart widgets to your layout. For full control, you can let the charting engine directly draw onto a QPainter provided by your application.

Empower Your End Users

GraphPak for Qt lets you put more data visualization features in the hands of your users.

Your charting applications can therefore leave decisions about visual appearance until runtime, where the user can choose a preferred visual style from the list of chart templates available.

GraphPak for Qt allows up to nine different header areas and the same number of footers, offering both predefined and user-made axis title boxes. And because mouse clicks on data points are reported as Qt signals, user interaction is a breeze.

Simple to Port

Applications built with GraphPak for Qt are easily moved to a wide variety of UNIX, Linux, Windows, and MacOS platforms. This provides a significant savings in development cost while reducing the cost of configuration management by allowing you to maintain only one source base.

Includes KD Chart

Featuring KD Chart from Klarälvdalens-Datakonsult AB, GraphPak for Qt is unsurpassed in the flexibility and customization it offers developers.

Free Evaluations

GraphPak for Qt is available directly through ICS and its worldwide network of distributors. To get an evaluation copy of GraphPak for Qt, send your request via email to info@ics.com, visit <http://www.ics.com>, or call 1.617.621.0060.

Qt Training and Professional Services

As Trolltech's **preferred training partner** for North America, ICS provides a full spectrum of training courses on the Qt framework.

ICS has an extensive professional services practice including:

- Motif-to-Qt Migration Assessment
- Application Performance Review
- Custom Widget Development
- User Interface and Custom Application Development

About ICS

Driven by the belief that the success of any software application depends on the intuitiveness of the user interface, Integrated Computer Solutions, Inc., The User Interface Company™, of Cambridge, MA, is the world's leading provider of advanced user-interface development tools and services for professional software engineers in the aerospace, petrochemical, transportation, military, communications, entertainment, scientific, and financial industries.

Long recognized as the platform of choice for visually developing mission-critical, high-performance Motif applications, ICS' BX series of GUI builders has recently been expanded to provide a complete line of tools that accelerate development of Java™. ICS is the largest independent supplier of add-on products to the Qt multi-platform framework developed by Trolltech.



**Integrated Computer
Solutions Incorporated**

The User Interface Company™

201 Broadway • Cambridge, MA 02139
617.621.0060 (Phone)
617.621.9555 (Fax)
www.ics.com • info@ics.com

Doc# GP104